

Welcome to the September & October edition of the newsletter

Since the last issue we have survived the hot weather, finished some commissions, sorted out the wood in the workshop and completed some of our own projects for sale.

On 14th August we had a stall at the Rotary Car Show in Waldron and raised £160.00 from sales.

On BH Monday the 29th August we were at Le Marche in town & raised approx. £160. Thanks to those that helped.



Sessions are continuing on Tuesdays & Thursdays and now include a welcome lunch break between 12.30-1.30pm which is proving popular and allows us to interact and socialize more fully with members. We have a few guys who just come for a chat, coffee, biscuits and some bring their lunch. It is good to see new faces on a regular basis.

Recent supplied commissions as follows: -

Two large legged planters – Thanks to Mike

Garden Signage – Thanks John

Cheese Boards, pot holders, garden markers, story boxes – Thanks Terry

Marigold stands and key rings – Thanks Bob

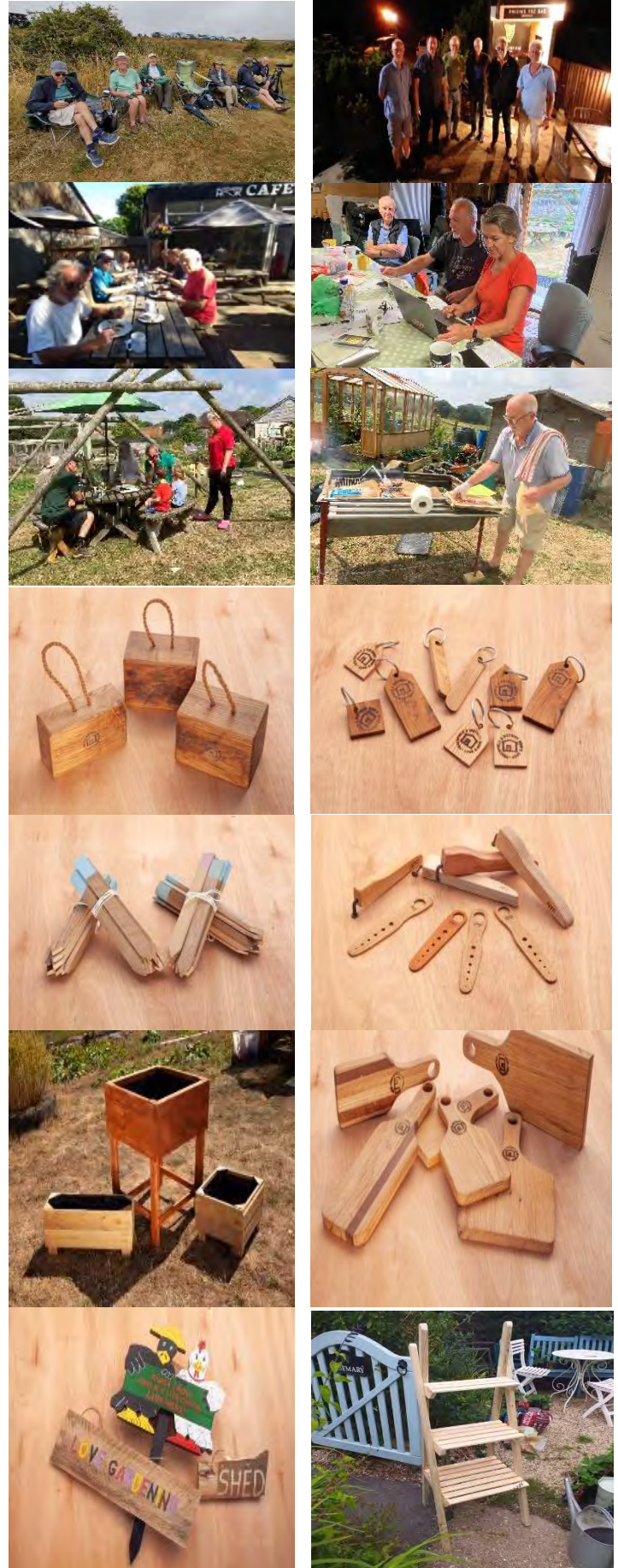
Commissions in hand / to do: -

Pool table repair - tbc, 2nd Crib scene, levelling Union Church food stand. Bench paint Peter A (Unk Albert), signage, lampshade.

New Sales Products: -

Step flower pot Hangers, Platters, cocktail stick pots, trivet, door stops, key rings to name but a few. All pics on our web.

This month's photo gallery:



Diary of Events September – October: -

Shed Sessions – Open every Tuesday and Thursday from 9.30am – 3.30pm to include a break for lunch 12.30-1.30pm – members can bring their own lunch.
NB/ We might close early (around 2pm) if workload completed.

Monthly Breakfast meets – on 2nd Monday of each month at Hooks near Heathfield market 9am. Next ones are on **12th September & 10th October**. All welcome.

Monthly Pub Nights – on 4th Monday of each month at The Runt in Tun, Hailsham road 7pm. Next ones on **26th September & 24th October**.

Monday 5th September * – Chinese Night at the Wok Inn, The Broyle, Laughton - BN8 6PH (between Halland & Ringmer) at 7.00 p.m. RSVP essential ASAP.

Thursday 8th September - Stall at Waldron Market (Holy Cross).

Saturday 1st October * – Race Night at the Kings Church. Organised by Roger Dann in support of Harambee for Kenya. 7.30 RSVP. Shed team / spouses?


Monday 3rd October * – Evening at the Tap Room at Lakedown Brewery in Swife Lane, Burwash TN21 8UX from 6:00 – 8:30 p.m. Spouses welcome & RSVP.

Thursday 13th October - Market Stall at Waldron Market (Holy Cross)

Saturday 15th October - Market Stall at Heathfield market 8.30am – 3pm. Please advise if you can assist.

Saturday 22nd October * – Heathfield & District bonfire society event. Marshalls required - Please advise.

For items marked * please advise either Nic or Peter B if you would like to attend ASAP.

First Aid training for anyone who missed the last sessions or who would be interested in attending. 
Training takes half a day and date is on 14th & 19th October. 9.30 – 12.30.

We are also offering DBS checks for those who would like to have one. These are free of charge. Please advise.
Anyone wanting to attend the First Aid Training or to have a DBS check carried out, please let PB know asap.

Information and updates about the Men's Shed can be found on our website at:
www.ageconcernheathfield.org.uk or by typing Heathfield Men's Shed into the search bar.

Help needed...*

If anyone can assist with market stalls either by selling on the day or by helping to lug kit to & fro before and after the stall, it would be very helpful. We totally rely on our sales & product supply to maintain our existence - please don't leave it to the few.

General: -

We are seeking funds for an on-site defibrillator to add to a recent bequest. We have asked Rotary for additional funding.

Would like to plant bulbs, plants & or meadow seeds adjacent to the Shed if anyone interested in a bit of gardening? If so, please advise Peter B.

NFF have started supplying wood for planters & pallets are regularly coming in via HKS & more recently Cade St. Nursery- thanks Mike, Bob and Phil

Phil is trying to gain sales space locally as an outlet of our goods with various garden centers.

Positions on the committee & formalization of specific roles are now in hand covering diary of events, membership, finance, sales & marketing & secretarial roles.

Bob took some great pictures of our products recently – on web & on front page.

Thanks to Annabel from ACH for carrying out recent DBS checks.

Big thanks to Simon Paige for showing members carving techniques.

